

## 2016 ISAF Sailing World Cup

### ISAF Sailing World Cup Miami Round SAILING INSTRUCTIONS (RSI) Addendum

#### RSI 2 ADVERTISING and BOW NUMBERS [DP] [NP]

- RSI 2.1 Boats are required to display the following advertising that will be provided by the OA and shall be fixed in accordance with the instructions posted on the Official Notice Board:
- (a) Sunbrella stickers

#### RSI 7 SAFETY REGULATIONS [DP] [NP]

- RSI 7.1 Emergency Communications

Radio Channel	See attachment
Emergency services phoneline	911
Organizing Authority email	miamiocr@ussailing.org

#### RSI 9 COMMUNICATIONS WITH COMPETITORS

- RSI 9.1 In addition to <http://www.sailing.org/worldcup/onb.php>, notices to competitors will also be posted on the official notice board located US Sailing Center. Some notices may also be posted at other Shake a Leg, Regatta Park and CGSC. Failure to post a notice at these other locations will not be grounds for redress. This changes RRS 62.
- RSI 9.2 Signals ashore will be displayed at flagpoles, see attachment.
- RSI 9.3 There will be a daily morning meeting with team leaders at 0800 in US Sailing Center.
- RSI 9.4 When flag AP is displayed ashore, '1 minute' in RRS Race Signals AP is replaced with 60 minutes.

#### RSI 13 COURSE AREAS and MARKS

- RSI13.1 Course Areas are shown in Addendum RSI 1.
- RSI 13.2 Marks 1, 2, 3, and 4, or associated gate marks, will be as follows:

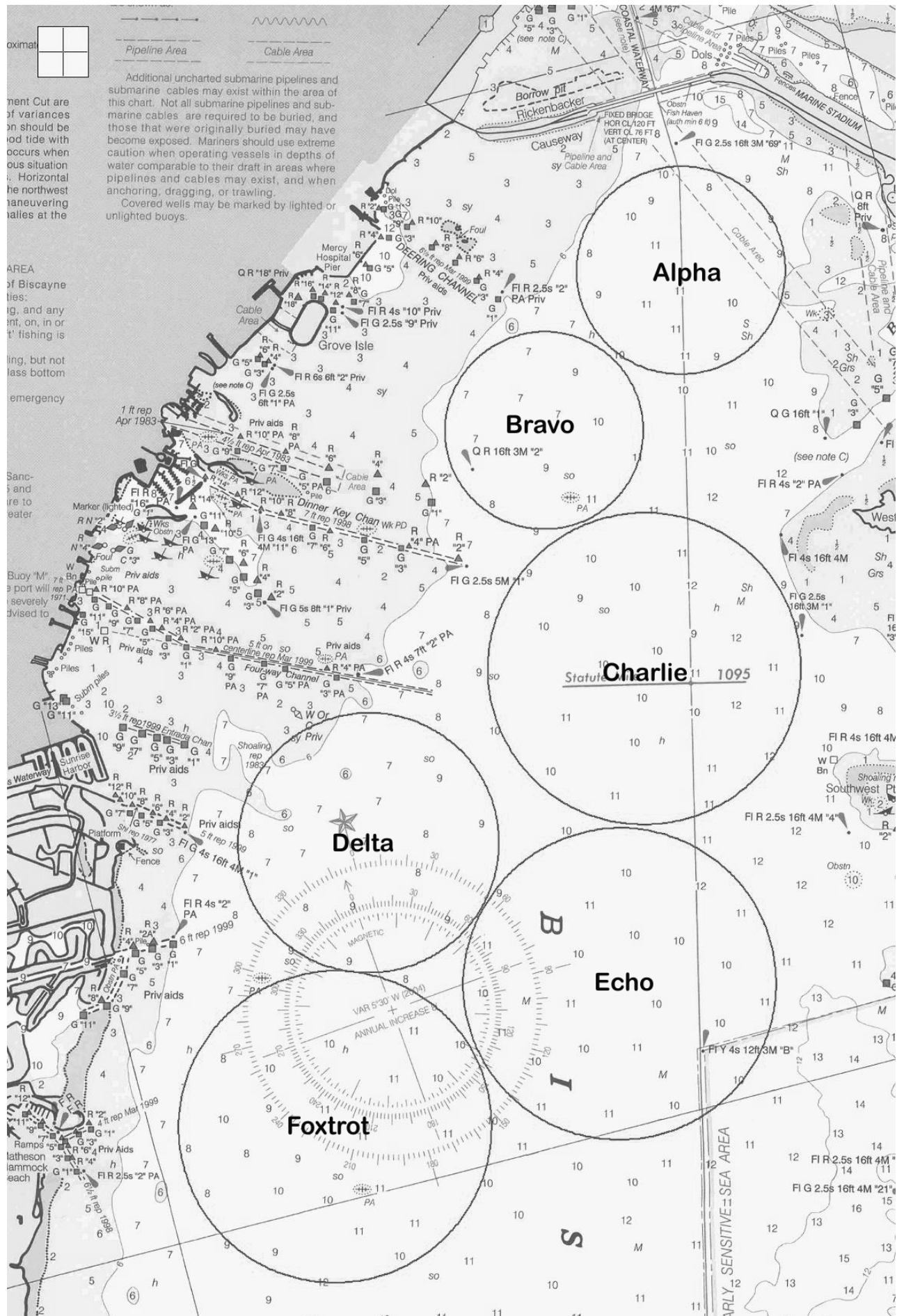
Area	Marks 1, 2, 3, 4	New Mark	Inflatable Finish Line Mark
Alpha	Orange sphere	Yellow tetrahedron	
Bravo	See RSI 13.7	Yellow cylinder	White tetrahedron
Charlie	Orange Sphere	Yellow tetrahedron	
Delta	Orange Sphere	Yellow tetrahedron	Green tetrahedron
Echo	Orange Sphere	Yellow tetrahedron	Green tetrahedron
Foxtrot	Orange Sphere	Yellow tetrahedron	Blue tetrahedron

- RSI 13.4 Offset marks will be red sphere.
- RSI 13.5 Marks S1, S2, and S3 will be red sphere.
- RSI 13.6 The starting and finishing line marks will be race committee vessels or inflatable marks.
- RSI 13.7 On Bravo course, mark 1 will be an orange sphere and mark 4 and associated gate marks will be yellow cylinders.

#### RSI 19 PROTESTS, PENALTIES and REQUESTS for REDRESS

- RSI 19.1 The protest time limit is 90 minutes after the last boat has finished the last race of the day or "AP over A" or "N over A" is displayed for an event/fleet.

# RSI ADDENDUM 1 CHART OF COURSE AREAS



Area	Area Centre	Area Diameter	VHF Channel
Alpha	25° 43.926' N 80° 11.142 W	1.00 nm	73
Bravo	25° 43.345' N 80° 12.055 W	0.95 nm	71
Charlie	25° 42.117 N 80° 11.855 W	1.50 nm	72
Delta	25° 41.639 N 80° 13.501' W	1.25 nm	78
Echo	25° 40.681' N 80° 12.398' W	1.50 nm	74
Foxtrot	25° 40.358' N 80° 14.047' W	1.50 nm	69

Area	Signals Ashore Flagpole at;
Alpha	Seminole Boat Ramp
Bravo	Shake a Leg
Charlie	Seminole Boat Ramp
Delta	Coconut Grove Sailing Club
Echo	US Sailing Center
Foxtrot	470: US Sailing Center Finn: Shake a Leg